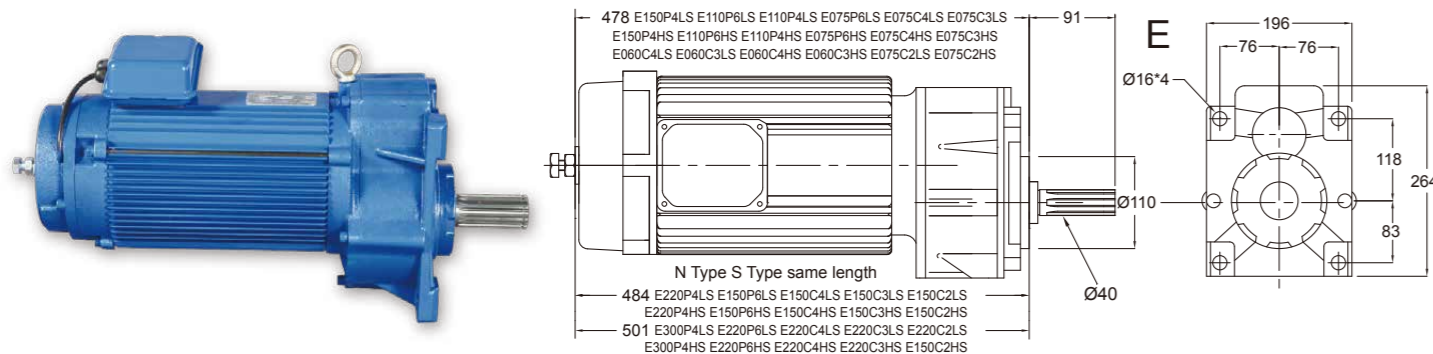


TYPE / E Tooth modulus M4(15T~25T) M5(13T~20T) M6(11T~16T)

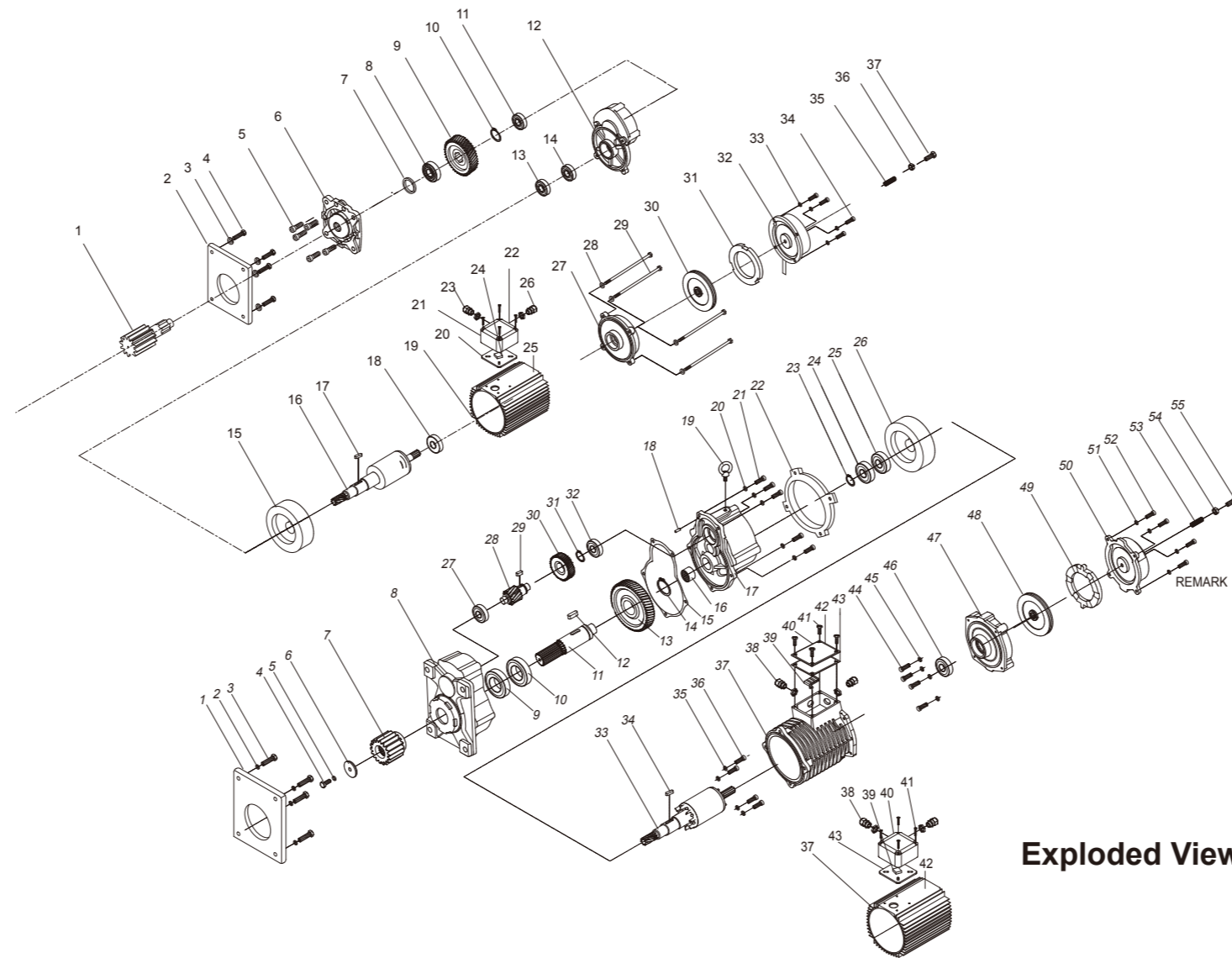
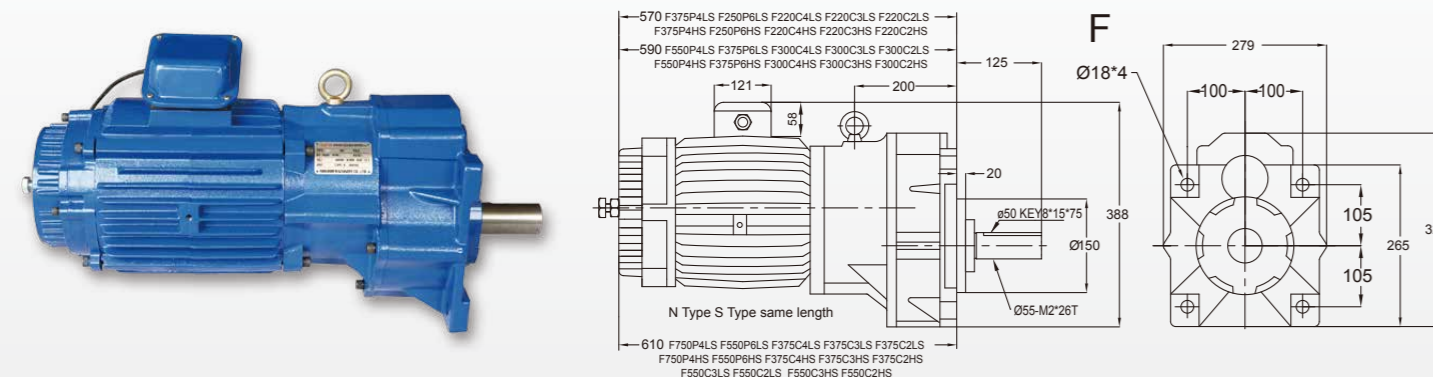
MODEL	KW	P	V	RATIO	50HZ	60HZ	WT
E110P4BS E110P4LS E110P4HS	1.1	4	220-600	20.3 16 11.5	72 91 127	86 109 153	46
E075P6BS E075P6LS E075P6HS	0.75	6	220-600	20.3 16 11.5	48 61 85	57 73 102	46
E150P4BS E150P4LS E150P4HS	1.5	4	220-600	20.3 16 11.5	72 91 127	86 109 153	54
E110P6BS E110P6LS E110P6HS	1.1	6	220-600	20.3 16 11.5	48 61 85	57 73 102	54
E220P4BS E220P4LS E220P4HS	2.2	4	220-600	20.3 16 11.5	72 91 127	86 109 153	66
E150P6BS E150P6LS E150P6HS	1.5	6	220-600	20.3 16 11.5	48 61 85	57 73 102	66
E060C2BS E060C2LS E060C2HS	0.6*0.3	4*8	220-600	20.3 16 11.5	72/36-91/45-127/63	86/43-109/55-153/74	46
E060C3BS E060C3LS E060C3HS	0.6*0.2	4*12	220-600	20.3 16 11.5	72/24-91/30-127/42	86/29-109/36-153/51	46
E075C2BS E075C2LS E075C2HS	0.75*0.38	4*8	220-600	20.3 16 11.5	72/36-91/45-127/63	86/43-109/55-153/74	54
E075C3BS E075C3LS E075C3HS	0.75*0.25	4*12	220-600	20.3 16 11.5	72/24-91/30-127/42	86/29-109/36-153/51	54
E075C3BS E075C4LS E075C4HS	0.75*0.18	2*8	220-600	20.3 16 11.5	144/36-182/45-254/63	172/43-218/55-306/74	54
E150C2BS E150C2LS E150C2HS	1.5*0.75	4*8	220-600	20.3 16 11.5	72/36-91/45-127/63	86/43-109/55-153/74	66
E150C3BS E150C3LS E150C3HS	1.5*0.5	4*12	220-600	20.3 16 11.5	72/24-91/30-127/42	86/29-109/36-153/51	66
E150C4BS E150C4LS E150C4HS	1.5*0.37	2*8	220-600	20.3 16 11.5	144/36-182/45-254/63	172/43-218/55-306/74	66
E220C2BS E220C2LS E220C2HS	2.2*1.1	4*8	220-600	20.3 16 11.5	72/36-91/45-127/63	86/43-109/55-153/74	90
E220C3BS E220C3LS E220C3HS	2.2*0.75	4*12	220-600	20.3 16 11.5	72/24-91/30-127/42	86/29-109/36-153/51	90
E220C4BS E220C4LS E220C4HS	2.2*0.55	2*8	220-600	20.3 16 11.5	144/36-182/45-254/63	172/43-218/55-306/74	90
E300P4BS E300P4LS E300P4HS	3	4	220-600	20.3 16 11.5	72 91 127	86 109 153	88
E220P6BS E220P6LS E220P6HS	2.2	6	220-600	20.3 16 11.5	48 61 85	57 73 102	88

If the code S change to N It becomes unbuffered models E220P4LS with buffer E220P4LN without buffer


TYPE / F Tooth modulus M5(17T~28T) M6(14T~23T) M7(13T~19T) M8(12T~16T) M10(9T~13T)

MODEL	KW	P	V	RATIO	50HZ	60HZ	WT
F375P4BS F375P4LS F375P4HS	3.75	4	220-600	23.7 18.5 12	61 79 123	74 95 147	110
F220P6BS F220P6LS F220P6HS	2.2	6	220-600	23.7 18.5 12	41 53 82	49 63 98	110
F550P4BS F550P4LS F550P4HS	5.5	4	220-600	23.7 18.5 12	61 79 123	74 95 147	139
F375P6BS F375P6LS F375P6HS	3.75	6	220-600	23.7 18.5 12	41 53 82	49 63 98	139
F750P4BS F750P4LS F750P4HS	7.5	4	220-600	23.7 18.5 12	61 79 123	74 95 147	148
F550P6BS F550P6LS F550P6HS	5.5	6	220-600	23.7 18.5 12	41 53 82	49 63 98	148
F220C2BS F220C2LS F220C2HS	2.2*1.1	4*8	220-600	23.7 18.5 12	61/30-79/39-123/62	74/37-95/47-147/73	110
F220C3BS F220C3LS F220C3HS	2.2*0.75	4*12	220-600	23.7 18.5 12	61/20-79/26-123/41	74/25-95/32-147/49	110
F220C4BS F220C4LS F220C4HS	2.2*0.55	2*8	220-600	23.7 18.5 12	122/30-158/39-246/62	148/37-190/47-294/73	110
F300C2BS F300C2LS F300C2HS	3*1.5	4*8	220-600	23.7 18.5 12	61/30-79/39-123/62	74/37-95/47-147/73	139
F300C3BS F300C3LS F300C3HS	3*1	4*12	220*600	23.7 18.5 12	61/20-79/26-123/41	74/25-95/32-147/49	139
F300C4BS F300C4LS F300C4HS	3*0.75	2*8	220-600	23.7 18.5 12	122/30-158/39-246/62	148/37-190/47-294/73	139
F375C2BS F375C2LS F375C2HS	3.75*1.8	4*8	220-600	23.7 18.5 12	61/30-79/39-123/62	74/37-95/47-147/73	148
F375C3BS F375C3LS F375C3HS	3.75*1.25	4*12	220-600	23.7 18.5 12	61/20-79/26-123/41	74/25-95/32-147/49	148
F375C4BS F375C4LS F375C4HS	3.75*0.95	2*8	220-600	23.7 18.5 12	122/30-158/39-246/62	148/37-190/47-294/73	148
F550C2BS F550C2LS F550C2HS	5.5*2.8	4*8	220-600	23.7 18.5 12	61/30-79/39-123/62	74/37-95/47-147/73	165
F550C3BS F550C3LS F550C3HS	5.5*1.8	4*12	220-600	23.7 18.5 12	61/20-79/26-123/41	74/25-95/32-147/49	165

If the code S change to N It becomes unbuffered models F375P4LS with buffer F375P4LN without buffer

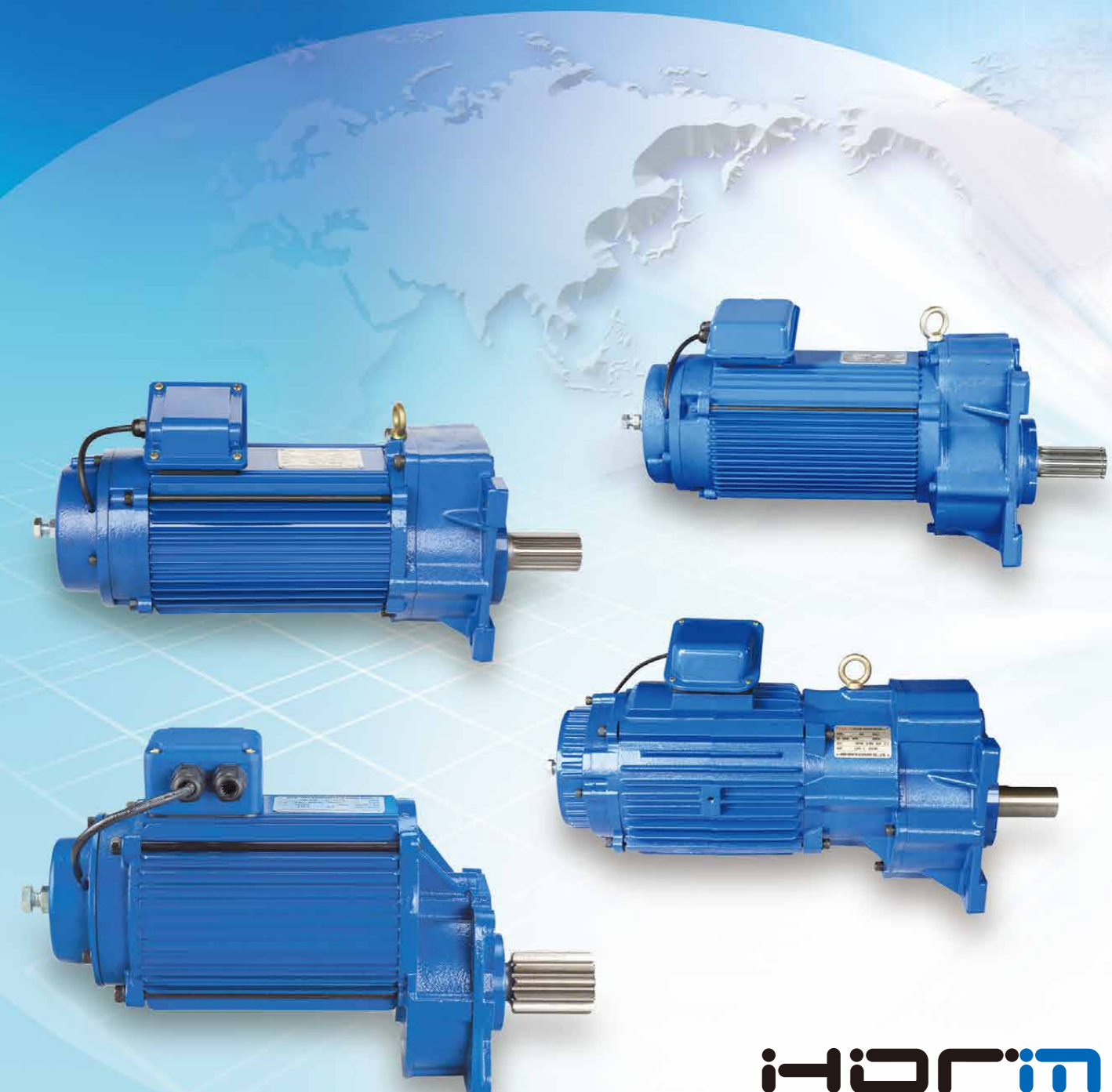

Exploded View

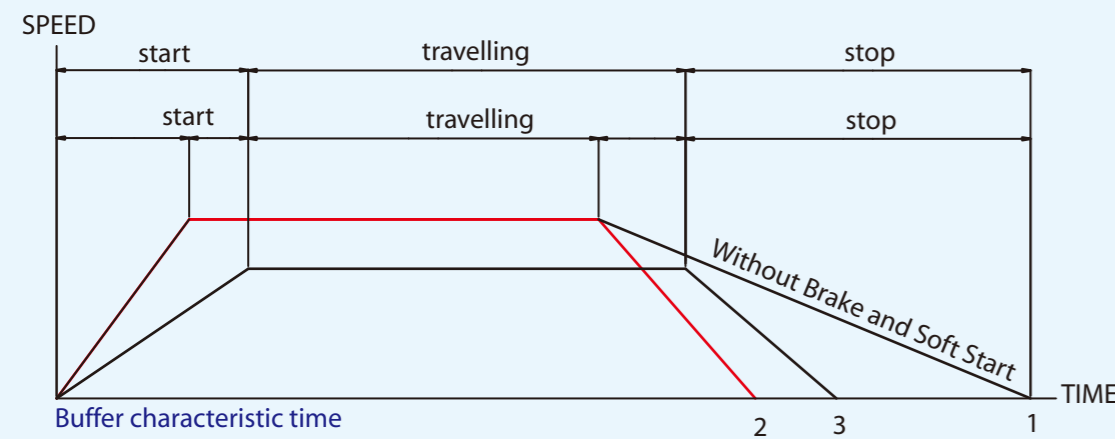
ITEM	DESCRIPTION	Q'TY	ITEM	DESCRIPTION	Q'TY	ITEM	DESCRIPTION	Q'TY	ITEM	DESCRIPTION	Q'TY
1	OUT-PUT GEAR	1	11	BALL BEARING	1	21	JUNCTION BOX	1	31	FRICITION DISC	1
2	FLANGE	1	12	GEAR CASE B	1	22	JUNCTION COVER	1	32	BRAKE MAGNET	1
3	SPRING LOCK WASHER	4	13	BALL BEARING	1	23	CABLE GLAND	2	33	SPRING LOCK WASHER	3
4	HEX BOLT	4	14	BALL BEARING	1	24	DIODE	1	34	HEX-SOCKET CAP BOLT	3
5	HEX-SOCKET CAP BOLT	5	15	FLY WHEEL	1	25	NAME PLATE	1	35	BRAKE SPRING	1
6	GEAR CASE A	1	16	ROTOR+SHAFT	1	26	HEX-SOCKET CAP BOLT	4	36	TORQUE ADJUSTING NUT	1
7	BUSH	1	17	KEY	1	27	MOTOR END COVER	1	37	TORQUE ADJUSTING BOLT	1
8	BALL BEARING	1	18	BALL BEARING	1	28	SPRING LOCK WASHER	4			
9	1ST GEAR	1	19	MOTOR HOUSING	1	29	HEX-SOCKET CAP BOLT	4			
10	RETAINING RING	1	20	GASKET	1	30	BRAKE LINING	1			

ITEM	DESCRIPTION	Q'TY	ITEM	DESCRIPTION	Q'TY	ITEM	DESCRIPTION	Q'TY	ITEM	DESCRIPTION	Q'TY
1	FLANGE	1	12	KEY	1	23	RETAINING RING	1	34	KEY	1
2	SPRING LOCK WASHER	4	13	3 RD GEAR	1	24	BALL BEARING	1	35	SPRING LOCK WASHER	4
3	HEX BOLT	4	14	RETAINING RING	1	25	BALL BEARING	1	36	HEX-SOCKET CAP BOLT	4
4	TORQUE ADJUSTING BOLT	1	15	GASKET	1	26	FLYWHEEL	1	37	MOTOR HOUSING	1
5	SPRING LOCK WASHER	1	16	ROLLER BEARING	1	27	BALL BEARING	1	38	CABLE GLAND	2
6	WASHER	1	17	GEAR CASE B	1	28	2 ND GEAR	1	39	DIODE	1
7	OUT-GEAR	1	18	PIN	1	29	KEY	1	40	JUNCTION COVER	1
8	GEAR CASE A	1	19	EYEBOLT	1	30	1 ST GEAR	1	41	COVER BOLT	4
9	BALL BEARING 6209ZZ	1	20	SPRING LOCK WASHER	5	31	RETAINING RING	1	42	NAME PLATE	1
10	BALL BEARING 6209ZZ	1	21	HEX-SOCKET CAP BOLT	5	32	BALL BEARING	1	43	GASKET	1
11	OUT-PUT SHAFT	1	22	CONNET PLATE	1	33	ROTOR+SHAFT	1	44	HEX-SOCKET CAP BOLT	4

Soft Start Reduction Motor

Professional manufacturer of full range of motors with light weight, prominent feature, low noise, high performance, reliability and durability.





- ① Without Brake and Soft Start
- ② With Brake Without Soft Start
- ③ With Brake With Soft Start

Characteristics

1. The motor is manufactured from lightweight Aluminium Alloy material which has excellent thermal diffusion as a prominent feature.
2. The use of Steel Alloy material in the precise gear allows for smooth operation with low noise.
3. A Buffer is designed to enhance the motor life as well as to decrease the mechanical impact whilst the motor is running.
4. The IP54 rated motor features high starting torque, excellent thermal dissipation. It is also compact, has low current consumption with long term reliability and durability.
5. Incorporating a direct electro-magnetic brake, the driving force of the motor can be easily adjusted.
6. Brake lining using environmentally friendly materials, can be long time use.

Model number definition

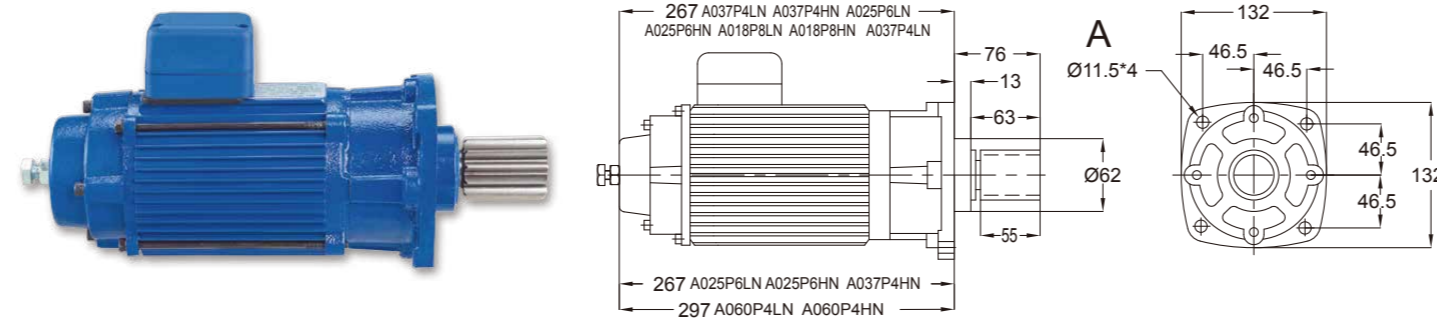
C 075 P4 (C2) L S(N) - 50 - 380 - M4 - T

1 2 3 4 5 6 7 8 9 10

- 1- Type: A,B,C,D,E,F
- 2- Motor capacity: 075=0.75kw
- 3- Single speed motor: P4:4 pole, P6:6 pole
- 4- Dual speed motor: C2=4P/8P, C3=4P/12P, C4=2P/8P
- 5- Output speed(RPM): B=slow speed, L=low speed, H=high speed
- 6- Buffer: S:with buffer, N:w/o buffer
- 7- Frequency: 50=50HZ, 60=60HZ
- 8- Voltage: 220-600=220V-600V
- 9- Modulus of pinion teeth: M3.5, M4, M5, M6, M7, M8
- 10- Number of pinion teeth: 7-25

TYPE / A Tooth modulus M3(11T~18T) M3.5(9T~14T) M4(10T~12T)

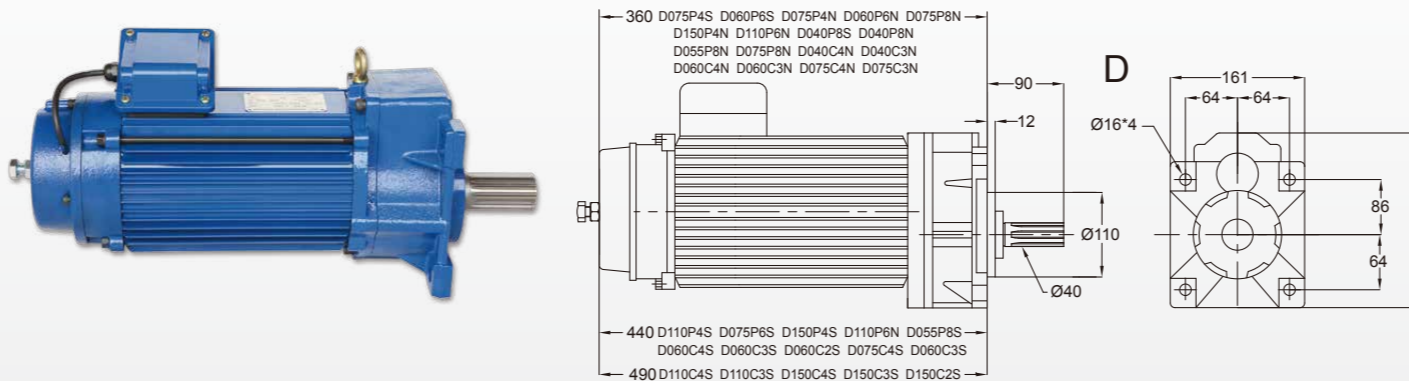
MODEL	KW	P	V	RATIO	50HZ	60HZ	WT
A037P4L A037P4H	0.375	4	220-440	10 7.8	150/183	180/220	13.4
A025P6L A025P6H	0.25	6	220-440	10 7.8	100/122	120/147	13.4
A018P8L A018P8H	0.18	8	220-440	10 7.8	75/91	90/110	13.4
A060P4L A060P4H	0.6	4	220-440	10 7.8	150/183	180/220	16
A037P6L A037P6H	0.375	6	220-440	10 7.8	100/122	120/147	16
A037P4LS A037P4HS	0.375	4	220-440	10 7.8	150/183	180/220	15.6
A025P6LS A025P6HS	0.25	6	220-440	10 7.8	100/122	120/147	15.6



TYPE / D Tooth modulus M4(15T~25T) M5(13T~20T) M6(11T~16T)

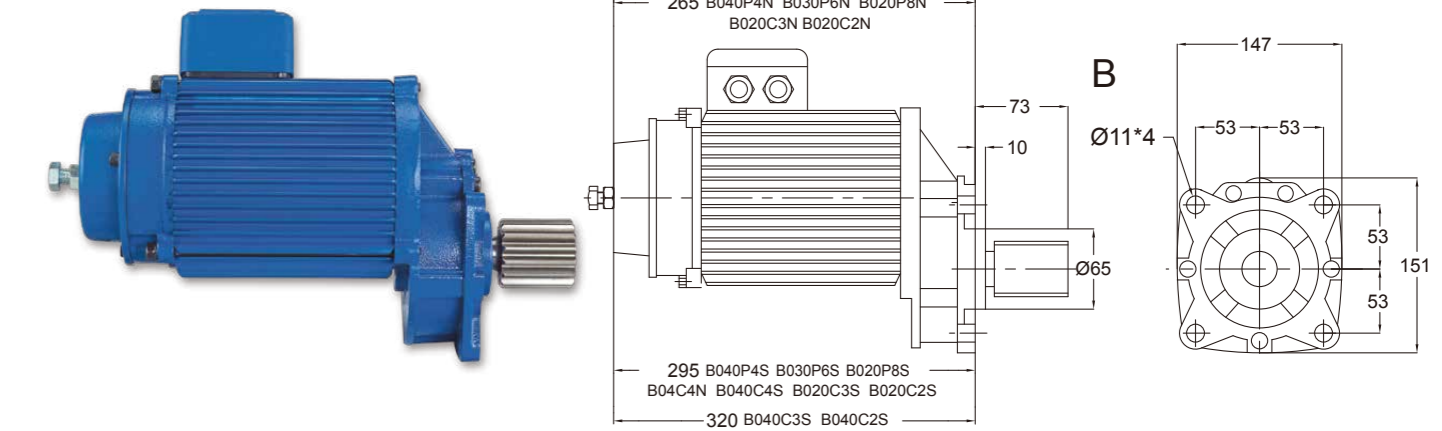
MODEL	KW	P	V	RATIO	50HZ	60HZ	WT
D075P4BS D075P4S	0.75	4	220-600	16.5 13	88/113	106/135	35 30
D060P4BS D060P6S	0.6	6	220-600	16.5 13	59/75	71/90	35 30
D110P4BS D110P4S	1.1	4	220-600	16.5 13	88/113	106/135	40 33
D075P6BS D075P6S	0.75	6	220-600	16.5 13	59/75	71/90	40 33
D150P4BS D150P4S	1.5	4	220-600	16.5 13	88/113	106/135	44 38
D110P6BS D110P6S	1.1	6	220-600	16.5 13	59/75	71/90	44 38
D040P8BS D040P8S	0.38	8	220-600	16.5 13	44/56.5	53/67.5	35 30
D055P8BS D055P8S	0.55	8	220-600	16.5 13	44/56.5	53/67.5	40 33
D075P8BS D075P8S	0.75	8	220-600	16.5 13	44/56.5	53/67.5	44 38
D040C2BS D040C2S	0.4*0.2	4*8	220-600	16.5 13	88/44-113/56	106/53-135/67	35 30
D040C3BS D040C3S	0.4*0.13	4*12	220-600	16.5 13	88/29-113/38	106/35-135/45	35 30
D060C2BS D060C2S	0.6*0.3	4*8	220-600	16.5 13	88/44-113/56	106/53-135/67	40 33
D060C3BS D060C3S	0.6*0.2	4*12	220*600	16.5 13	88/29-113/38	106/35-135/45	40 33
D075C2BS D075C2S	0.75*0.38	4*8	220-600	16.5 13	88/44-113/56	106/53-135/67	44 38
D075C3BS D075C3S	0.75*0.25	4*12	220-600	16.5 13	88/29-113/38	106/35-135/45	44 38
D075C4BS D075C4S	0.75*0.18	2*8	220-600	16.5 13	176/44-226/56	212/53-270/67	44 38
D110C2BS D110C2S	1.1/0.55	4*8	220-600	16.5 13	88/44-113/56	106/53-135/67	46 40
D110C3BS D110C3S	1.1/0.37	4*12	220-600	16.5 13	88/29-113/38	106/35-135/45	44 38
D110C4BS D110C4S	1.1/0.25	2*8	220-600	16.5 13	176/44-226/56	212/53-270/67	44 38
D150C2BS D150C2S	1.5/0.75	4*8	220-600	16.5 13	88/44-113/56	106/53-135/67	50 43
D150C3BS D150C3S	1.5/0.5	4*12	220-600	16.5 13	88/29-113/38	106/35-135/45	50 43
D150C4BS D150C4S	1.5/0.375	2*8	220-600	16.5 13	176/44-226/56	212/53-270/67	50 43

If the code S change to N It becomes unbuffered models D150P4S with buffer D150P4N without buffer



TYPE / B Tooth modulus M3(11T~19T) M3.5(9T~16T) M4(9T~14T) M5(7T~10T)

MODEL	KW	P	V	RATIO	50HZ	60HZ	WT
B040P4S B040P4N	0.4	4	220-600	8.5	176	211	22.7 18.7
B030P6S B030P6N	0.3	6	220-600	8.5	118	141	22.7 18.7
B020P8S B020P8N	0.2	8	220-600	8.5	88	105	22.7 18.7
B020C2S B020C2N	0.2/0.07	4*8	220-600	8.5	176/88	211/105	22.7 18.7
B020C3S B020C3N	0.2/0.07	4*12	220-600	8.5	176/59	211/70	22.7 18.7
B040C2S B040C2N	0.4/0.2	4*8	220-600	8.5	176/88	211/105	25.7 21.7
B040C3S B040C3N	0.4/0.13	4*12	220-600	8.5	176/59	211/70	25.7 21.7



TYPE / C Tooth modulus M3(11T~23T) M3.5(9T~19T) M4(9T~17T) M5(7T~13T)

MODEL	KW	P	V	RATIO	50HZ	60HZ	WT
C075P4S C075P4N	0.75	4	220-600	7.7	192	230	29.4 24.2
C060P6S C060P6N	0.6	6	220-600	7.7	128	153	29.4 24.2
C110P4S C110P4N	1.1	4	220-600	7.7	192	230	34 28
C075P6S C075P6N	0.75	6	220-600	7.7	128	153	34 28
C040P8S C040P8N	0.38	8	220-600	7.7	96	115	29.4 24.2
C075P4BS C075P4BN	0.75	4	220-600	9	159	192	29.4 24.2
C060P6BS C060P6BN	0.6	6	220-600	9	106	127	29.4 24.2
C110P4BN C075P6BN	1.1 0.75	4 6	220-600	9	159 106	192 127	28 28
C040P8BS C040P8BN	0.38	8	220-600	9	80	96	29.4 24.2
C055P8S C055P8N	0.55	8	220-600	7.7	96	115	34 28
C040C2S C040C2N	0.4*0.2	4*8	220-600	7.7	192/96	230/115	29.4 24.2
C040C3S C040C3N	0.4*0.13	4*12	220-600	7.7	192/64	230/77	29.4 24.2
C040C4S C040C4N	0.4*0.1	2*8	220-600	7.7	384/96	460/115	29.4 24.2
C060C2S C060C2N	0.6*0.3	4*8	220-600	7.7	192/96	230/115	34 28
C060C3S C060C3N	0.6*0.2	4*12	220*600	7.7	192/64	230/77	34 28
C075C2S C075C2N	0.75*0.38	4*8	220-600	7.7	192/96	230/115	36 30
C075C3S C075C3N	0.75*0.25	4*12	220-600	7.7	192/64	230/77	36 30
C110C2S C110C2N	1.1/0.55	4*8	220-600	7.7	192/96	230/115	38 32
C110C3S C110C3N	1.1/0.37	4*12	220-600	7.7	192/64	230/77	38 32

